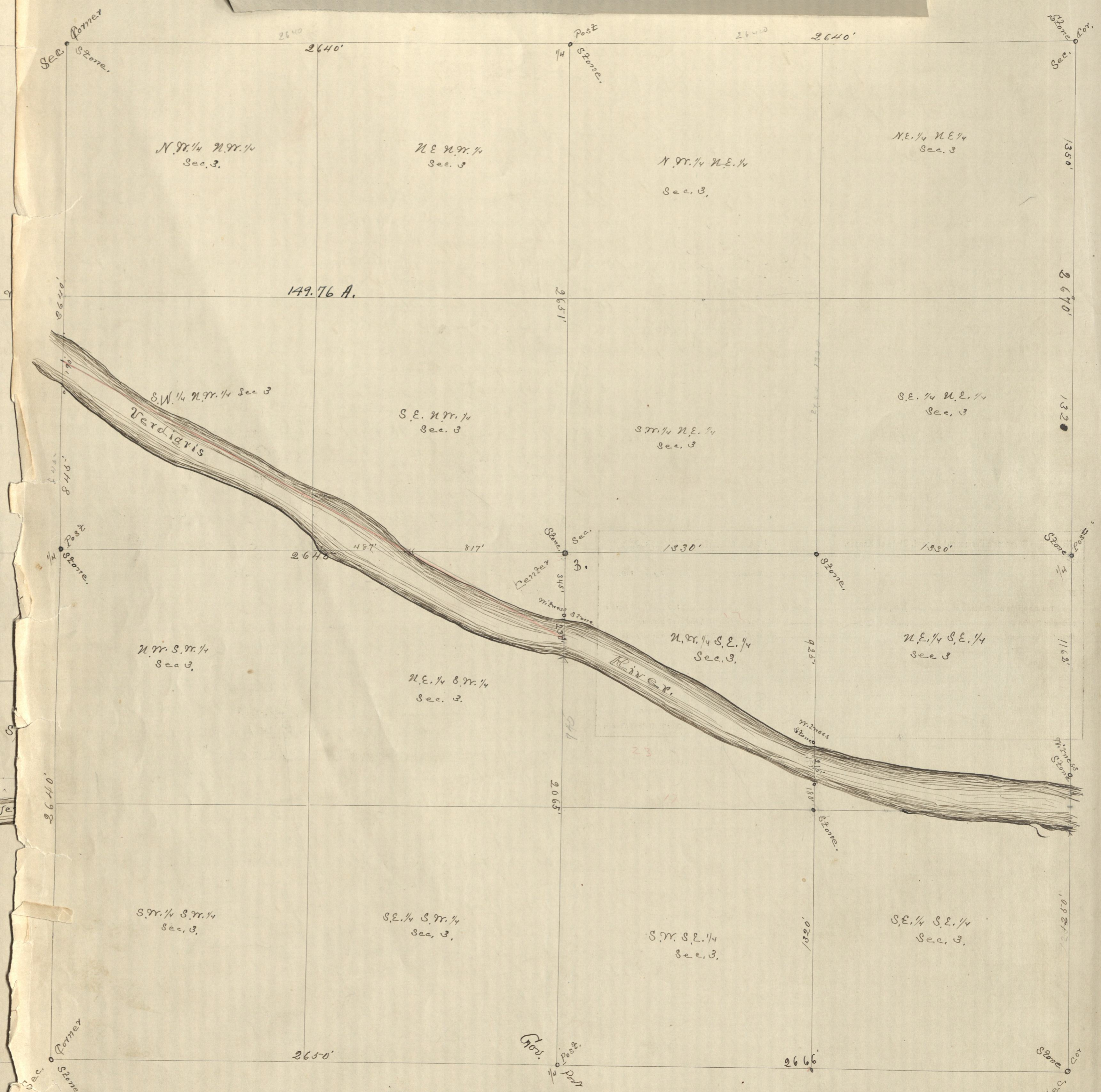


Sur

16

Copyright, 1891, by H. A. BAILEY, Topeka, Kansas.



NOTE.—SCALE.....CHAINS TO THE INCH IS USED IN THIS DIAGRAM.

This diagram to be used in platting either one, four or sixteen sections. When used for one section only, scale No. 1 applies; for four sections, scale No. 2; and for sixteen sections, scale No. 3.  
General Statutes 1889, § 1800: "And no diagram shall be constructed to scale less than one inch to twenty chains."

