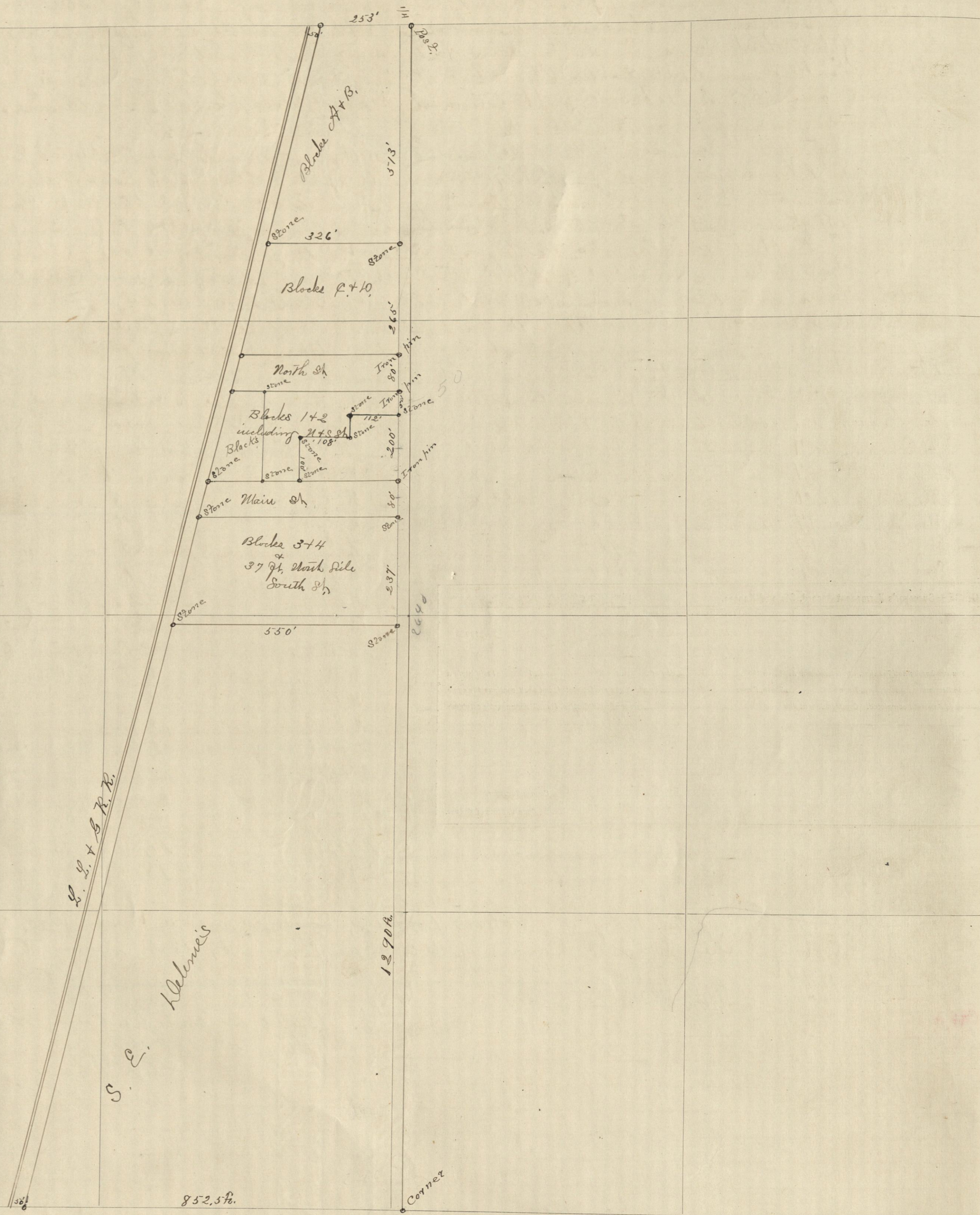


BLANK - SURVEYOR'S PERMANENT RECORD - KANSAS

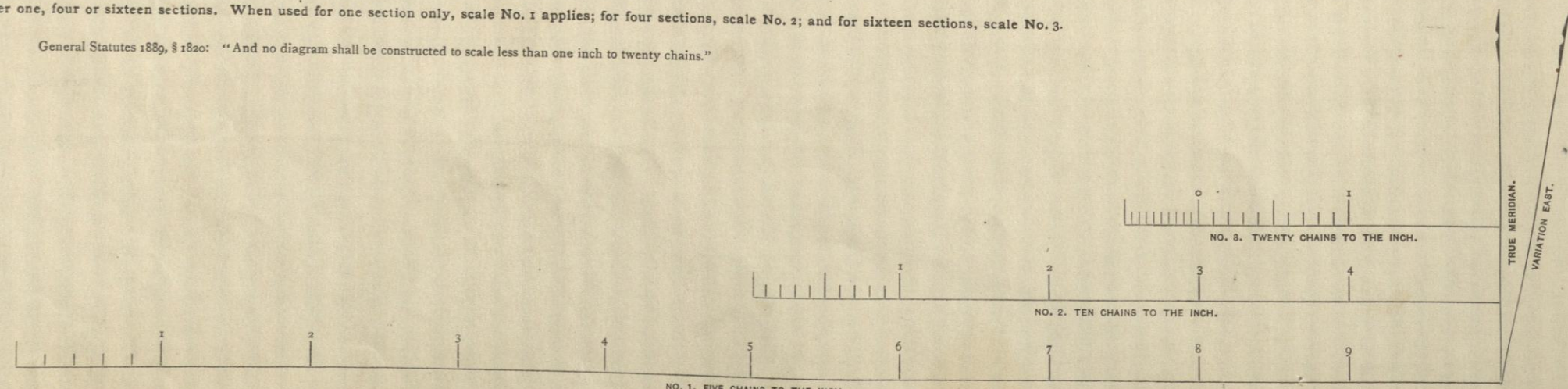
Talley Springs



NOTE.—SCALE.....CHAINS TO THE INCH IS USED IN THIS DIAGRAM.

This diagram to be used in platting either one, four or sixteen sections. When used for one section only, scale No. 1 applies; for four sections, scale No. 2; and for sixteen sections, scale No. 3.

General Statutes §§ 88, 88a: "And no diagram shall be constructed to scale less than one inch to twenty chains."



Geo. W. Crane & Co., Topka, Kas.

April 23rd 1894 I was ordered by petition of property owners of Talley Springs to survey and locate the lands owned by them. Applied by Joseph Little, Rebecca Bonnie R. Bonnie, S. E. Holmes, Laura Hicks + S. W. L. Burger - B. H. Black, Horace Johnson, Joseph Swan, Linn F. Marnell, Mary E. Butler + L. H. Bradshaw. Wrote affidavits on May 7th 1894 that a survey of Sec. 24 T. 34 R. 16 would be made on May 15th 1894. On May 15th 1894 I began the survey. T. J. Barlick + R. A. Marnell were chosen as chainmen and were duly sworn. From the S. E. corner of Sec. 24 T. 34 R. 16 E. (a stone) I ran north on Range line at 1320 ft. then stake at 2640 ft. then stake at temporary 1/4 post measured north 1 1/2 miles for corner from found point where temporary 1/4 post located to be correct. Then I set a limestone 42" x 18" x 4" marked 1/4 for 1/4 post on East side Sec. 24, at a point 30 ft. south + 30 ft. west of a point 80 rods north of S. E. corner of Sec. 24, E. Set a sand stone 30 x 10 x 8" marked X (this stone is 1290 ft. north of S. E. corner Sec. 24) At a point 550 ft. west on the East line of Right of way of L. L. + B. R. R. set a limestone 34 x 10 x 4" marked X. At a point 20 ft. East of N. E. corner of Block 4 or 30 ft. west of Range line set a limestone 24 x 8 x 6" marked X. At a point 10 ft. north from all four pins at a point 20 ft. East of N. E. corner of Block No. 1 show an iron pin as N. E. corner of Block 1. Then an iron pin at S. E. corner Block 1. Then an iron pin at S. E. corner Block 13. Limestone marked X. West + parallel with South line on East line of Right of way of R. R. limestone (S. W. corner Block B.) At the N. W. corner of Block 1 (as recorded plat) set a limestone 8 ft. west from S. W. corner in back of alley for Block 1 set a stone. At the S. W. corner of Block 12 Block 1 limestone 16 x 6 x 3. N. W. corner block 1 set stone. At N. E. corner block 2 limestone. N. W. corner block 2 set a stone. At the South west corner of Block 2 set a limestone on East line of Right of way. At the N. W. corner block 3 on East line of Right of way set a sand stone marked X. This completed the survey on the 16th of May 1894. No attention was paid to the North + South street through return blocks 3 + 4 nor any of the alleys as they are not used. South it is vacated.

Var. 8° 45' E.

Witness at Independence June 16th 1894
S. E. Holmes -
Co. Surveyor

NOTICE—Surveyor's Permanent Record, State of Kansas.

(Copyright, 1891, by B. A. HANAY, Topka, Kansas.)

Geo. W. Crane & Co., Printers and Binders, Topka, Kas.
Blank Books and Legal Blanks of Every Description.

Kansas, 189.....

M.....

You are hereby notified that, at.....o'clock A. M., on the.....day of.....189....., I will begin a survey on Section.....Town.....South, Range....., in which you are interested, and shall continue the same from day to day until completed. Commencing at the.....corner of said Section, I shall permanently establish.....

County Surveyor,
County, State of Kansas.