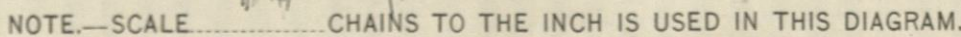


Copyright, 1964, by H. A. Bailey, Torrey, Kansas



This diagram to be used in platting either one, four or sixteen sections. When used for one section only, scale No. 1 applies; for four sections, scale No. 2; and for sixteen sections, scale No. 3.

General Statutes 1889, § 1890: "And no diagram shall be constructed to scale less than one inch to twenty chains."